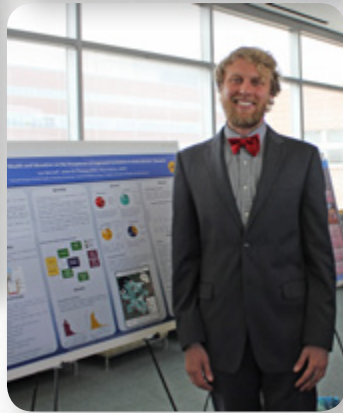


2014 ANNUAL REPORT



About Rose Community Foundation

Making the Greater Denver Community a Better Place

Rose Community Foundation was founded in 1995 following the sale of Rose Medical Center. For nearly 20 years, we have been working to make the Greater Denver community a better place for all people.

Mission: Rose Community Foundation works to enhance the quality of life of the Greater Denver community through its leadership, resources, traditions and values.

Vision: The Foundation uses leadership, grantmaking and donor engagement to invest in strategic and innovative solutions to enduring problems and emerging issues.

PHILANTHROPIC SERVICES

Services and tools to help donors make thoughtful, strategic decisions to achieve their philanthropic goals.

Endowment programs and services for nonprofits to support long-term sustainability.

GRANTMAKING

Grants to nonprofit organizations and public institutions working to improve the quality of life in the Greater Denver area, focusing on:

*Aging
Child and Family Development
Education
Health
Jewish Life*

INITIATIVES & SPECIAL PROGRAMS

Special programs that magnify the impact of our grantmaking focus areas and the Foundation as a whole, often in collaboration with other funders.

Learn more about our work and how you can get involved at rcfdenver.org.

Rose Community Foundation set out on a plan for intentional growth in 2012. That plan was rooted in an important philosophy that our staff and Board of Trustees strongly supported - the more people and resources we involve in our work, the greater impact we will have in our communities. We focused on being more intentional about reaching out and connecting with others. We began to work more collaboratively with other funders, we started offering more ways for people to get involved in our work and we stepped up our services to help donors be more strategic about their philanthropic decisions.

In 2014 these efforts began to reveal exciting results and we are thrilled to share some of the highlights with you in this report:

An inspiring array of resources came together – from national foundations working with us on collaborative projects, to more individuals and donors supporting our work – that led to nearly \$18 million in grants and distributions awarded in 2014.

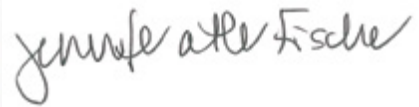
We celebrated significant milestones in each of our program areas – from achieving major policy changes, to launching innovative new initiatives – all of which were bolstered by working together with numerous partners, funders and organizations.

Many steps were taken toward helping individuals, families and organizations along their philanthropic journeys – from those just starting out to those making plans for future generations.

Throughout this report, you will have the opportunity to get to know some of the community members behind these philanthropic actions – volunteer committee members, donors and participants offer up words about their experiences. Without passionate people who are helping make the Greater Denver community the BEST place to live, none of this work would be possible.



Sheila Bugdanowitz
President and CEO



Jennifer Atler Fischer
Chair, Board of Trustees



Jerrold L. Glick
Chair Elect, Board of Trustees



Bringing Resources Together for Greater Impact

2014 was a big year for bringing resources, partners, people and funds together to make a greater impact.

One way was through working with other funders, something we did more of in 2014 than ever before. National funders supported our work locally, local funders partnered with us to pool resources and individual donors aligned with us on several pressing community issues. These partnerships, combined with our regular grant distributions, enabled us to invest nearly \$10 million in Denver metro community projects and programs in 2014.

Additionally, distributions from the funds we manage provided significant resources. Advisors to funds held at Rose Community Foundation recommended distributions of more than \$5 million to a range of projects and causes. Additionally, endowment and designated fund investments provided \$3 million in distributions to area nonprofit organizations.

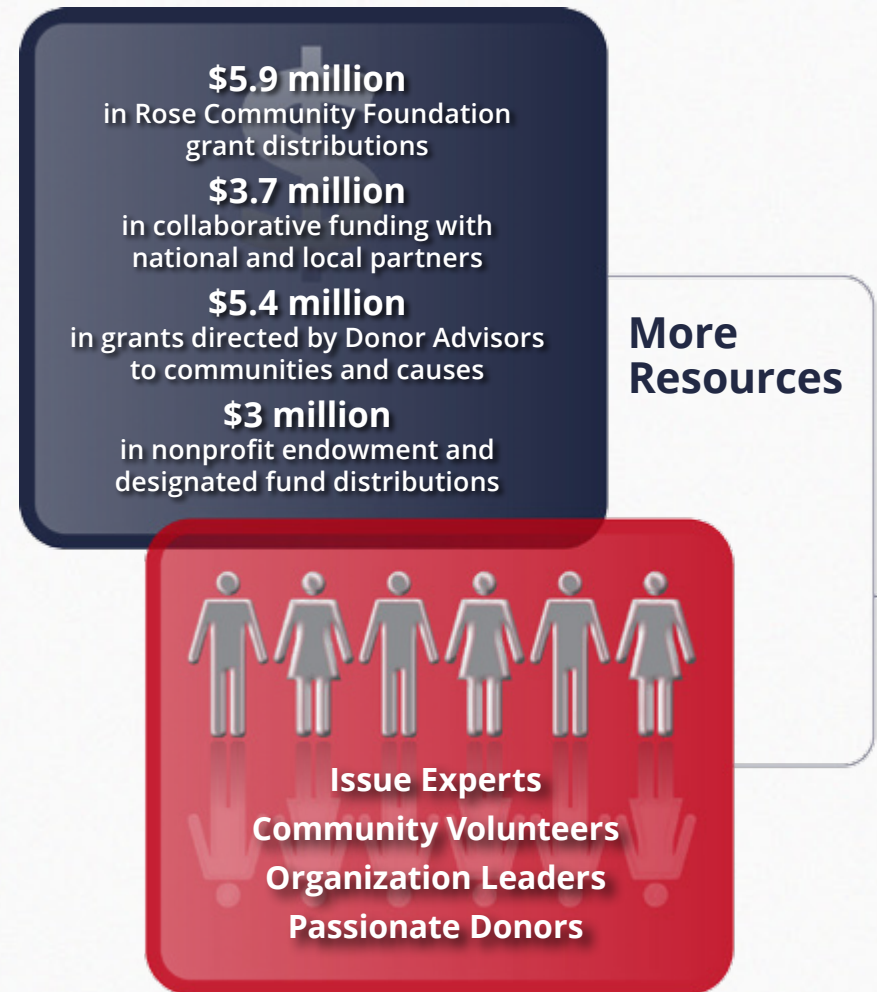
Of course, dollars are just one part of the equation. People are the other, and to affect change both are necessary. We are proud to be working together with passionate leaders, community experts and caring donors every day. They are the people who make innovative ideas a reality, who work tirelessly to influence policy and who are behind the strategies that result in long-term impact in the community.

Visit these pages for current lists of:

Donors: rcfdenver.org/ourdonors

Donor-directed grants: rcfdenver.org/donorgrants

Program area grants: rcfdenver.org/programgrants





“What I appreciate most about Rose Community Foundation’s work is that nothing stands alone. It all connects. I admire how the Foundation reaches far beyond its grantmaking dollars and skillfully weaves together multiple dimensions of community impact – from partnering with other organizations, to making strategic decisions through the lenses of innovation and policy. It’s exciting to be part of it all.”

Jeannie Ritter, member of Rose Community Foundation’s Health Committee, Mental Health Ambassador for the Mental Health Center of Denver, and former First Lady of Colorado

Lead to More...



Moving Community Impact Forward

With greater resources we have greater impact.

This impact shows throughout our program areas and initiatives. Our volunteer committees and Program Officers reported a wide range of exciting results in 2014, many of which involved collaborations, partnerships and community connections. Several highlights are on these pages. Find greater details about these and more on our website at rcfdenver.org/storiesofimpact.



Aging

- Rose Community Foundation received the 2014 Grantmakers in Aging Diversity Award for our long-term commitment to, and investment in, Colorado's Latino aging community.
- In 2014, Colorado Latino Age Wave (an initiative of the Latino Community Foundation of Colorado) made significant progress toward understanding and addressing the unique needs of metro Denver's rapidly growing Latino elder population and their family caregivers. Learn more at latinocfc.org/latino-age-wave.
- We continued to help older adults access public benefits that impact their quality of life and financial stability by funding BenefitsCheckUp (in partnership with other funders), a tool that has helped nearly 7,000 older adults receive an estimated \$98 million in federal and state benefits since 2001. Learn more at benefitscheckup.org.



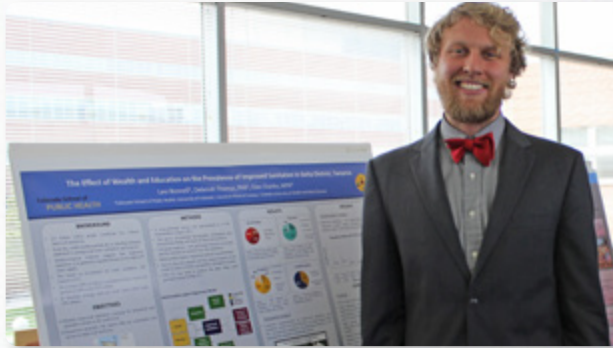
Child and Family Development

- In 2014, we joined with other funders to start planning a new early childhood intermediary organization, Early Milestones Colorado, which will identify and accelerate effective practices and systems.
- We supported implementation of the Colorado Office of Early Childhood and its Race to the Top Early Learning Challenge Fund to increase access to high-quality early learning programs and help develop the capacity of those serving children with the highest needs. Learn more at acf.hhs.gov/programs/ecd/early-learning/race-to-the-top.
- We supported several advocacy organizations that work at the systemic level on behalf of low-income children and families.



Education

- In 2014 we continued our focus on eliminating the achievement gap which included helping schools adopt successful models such as more and better learning time. We did this by investing in professional development to support high quality teachers and by encouraging practices like parent involvement that foster student achievement.
- We helped start a new organization, RISE Colorado, by providing matching start-up funds to help secure additional funding partners. RISE works with low-income and immigrant families in Aurora to support their children in school. Learn more at rise-colorado.org.
- We supported Adams County School District 50 with funding for teacher professional development which will help leverage data and make the transition to teaching the Colorado Academic Standards.



Health

- In 2014, we celebrated a significant policy improvement which allows 12 months of continuous eligibility for children in Medicaid. Years of work went into this achievement, led by a statewide coalition of Rose Community Foundation advocacy grantees.
- We supported several organizations working on children's mental health issues through pediatric practice transformation and advocacy. This work resulted in two big successes for children's mental health in 2014. Learn more at rcfdenver.org/ecmh.
- Through a staff position funded by Rose Community Foundation, Colorado's Office of Early Childhood was able to secure a \$4 million grant which will provide mental health services to 16,000 children in Adams County.



Jewish Life

- In 2014, we concentrated our resources on addressing critical times when research shows that Jewish identity is most likely to be formed: the birth of a child, early childhood and the teen years.
- We made bold strides toward increasing Jewish teen education and engagement by partnering with Jim Joseph Foundation and other funders to launch a \$5.6 million, four-year initiative that supports innovative new ways to connect teens to Jewish life. Learn more at rcfdenver.org/jewishteenengagement.
- We continue to invest significantly in Jewish early childhood education (ECE) launching BUILDing Jewish ECE with the JCC Association, Union of Reform Judaism, United Synagogue of Conservative Judaism and the Jay and Rose Phillips Family Foundation of Colorado, helping nine synagogues and JCCs with ECE centers grow enrollment and family engagement – the first effort of its kind in the nation and recognized widely in the Jewish press. Learn more at rcfdenver.org/buildingjewishece.

Guiding Philanthropic Journeys

At Rose Community Foundation, we view philanthropy as a journey.

We know that everyone's motivation to give is different and personal, and likely to evolve and change over time. Regardless of where someone might be along the path, we are committed to helping, and that starts with listening. In 2014, we worked closely with individuals, organizations and families, all at different stages of their philanthropic journeys. Some were just starting and wanted to learn more about pressing community issues or options for giving, while others sought guided family giving discussions to help introduce other family generations to the rewards of philanthropy.

Additionally, through several new and long-standing Rose Community Foundation giving groups, more than 150 individuals had the opportunity to learn about philanthropy and to explore personal values and interests in group settings.

Finally, we have accelerated our work with nonprofit organizations to help them develop nonprofit endowments as they ensure their financial futures.

We are honored to be a partner in so many inspiring journeys, several of which you can read about here, along with some of the ways we are committed to helping. Learn more at rcfdenver.org/giveandplan.

“My brothers and I came to Rose Community Foundation after our father passed us the baton to his private foundation. Robert L. Cohen had outlined the philanthropic direction for the RLC Foundation and we knew that we needed assistance to carry out those directives. A donor-advised fund at Rose Community Foundation was a good fit for us. The Foundation has been working with us, hand in hand, for more than ten years. Yes, it's a partnership, but it's much more. Rose Community Foundation has really included us as part of their family.”

– Devra Ochs, Stan Cohen and Frank Cohen

GIVING

Offering a tailored approach
to guided family giving

Helping you explore values
and set collective goals

Deciding how you would like to give

Offering unique ways to give (e.g., giving groups,
donor-advised funds, multi-generational giving,
bequests, endowments)



“I loved that I was able to contribute and participate in the Rose Community Foundation #MakItHappen giving group. Often it feels out of reach to make a difference in a meaningful way, but being part of the group enabled me to donate what I could. No matter how small the contribution, it still contributed to something greater.”

– Robin Glickstein

CONNECTING

Connecting you to issues
and causes that inspire you

Pairing you with nonprofit organizations or
like-minded people to advance your giving

Making our services available to you to
help you achieve your philanthropic goals



“As I began to operationalize my long-time vision to support those living with acquired spinal cord injury, I immediately felt a connection to Rose Community Foundation. The Foundation’s core operating principle of connecting leaders, expertise and resources so as to collaboratively serve our community resonates with me. Without a doubt, I connect with the organization’s values on many levels and every person I’ve interacted with has been an ambassador of those values. What’s been most welcoming has been their ability to be fully present and their genuine desire to understand what I wanted to do. We’re exploring together, and that means a lot to me.” – Indira S. Lanig M.D.

HONORING

Stewarding your philanthropic
experience beyond your own lifetime
through legacy gifts and more

Overseeing bequests and management
of your charitable distributions

Preserving philanthropic legacies

“It’s very important to me and my husband that we leave a philanthropic legacy, so when it came time to update our will, we decided to leave our estate to Rose Community Foundation. We completely trust the organization to invest in the types of projects and causes we care deeply about, and now our lifelong giving can live on in perpetuity even after we’re gone.”

– Joan and Mark Henneberry

LEARNING

Getting to know you, then connecting
you with the right tools and people

Helping you plan philanthropy that is
effective, fulfilling and consistent
with deeply held values

Working in partnership to turn your vision
for making a difference into reality

LISTENING

Understanding
how you want to give

Helping you establish goals

Hearing what ultimate impact
you are trying to make

“My parents have been very charitable over the years and they recently decided to involve me, my brother and our families in their philanthropy by allowing us to grant a certain amount each year. Rose Community Foundation helped us all learn and share by facilitating a family conversation about charitable giving, which was so valuable.”

– Dana Waldbaum



“I can’t think of a better place to carry out my long-term philanthropic

wishes than Rose Community Foundation. Holistically, their strategic focus is right in line with my interests, and I appreciate the very personal feel when working with the people there. I also find the Foundation’s approach to intergenerational philanthropy to be very thoughtful. Conversations with the staff helped me think beyond what I’m doing with my own personal philanthropy and to consider my entire family.”

– Steve Kris

Financial Highlights



Rose Community Foundation grantee, Clayton Early Learning, is a crucial partner in a long-term vision to ensure school readiness for all Colorado's children.

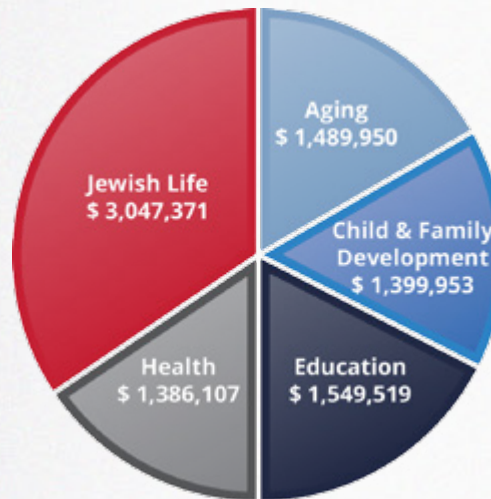


GRANTS AWARDED

Nearly **\$18 million** in 2014

\$223 million since inception (1995-2014)

By program area in 2014



In 2014, individual donors participated in #MakItHappen, a unique one-time Rose Community Foundation giving group and part of an international initiative of the Schusterman Family Foundation. The group funded eight innovative ideas for new Jewish experiences in their communities.

CONTRIBUTIONS 2014

\$5.8 million from national and local funders for collaborative projects

\$3.6 million into donor-advised funds

\$5.5 million into nonprofit endowment funds

Our nonprofit **endowments grew significantly** due to several new funds established at Rose Community Foundation in 2014, helping to build strength and sustainability for area nonprofits.

National and local funders joined us by **investing more than \$5 million** supporting a variety of grantmaking and project efforts.

ASSETS

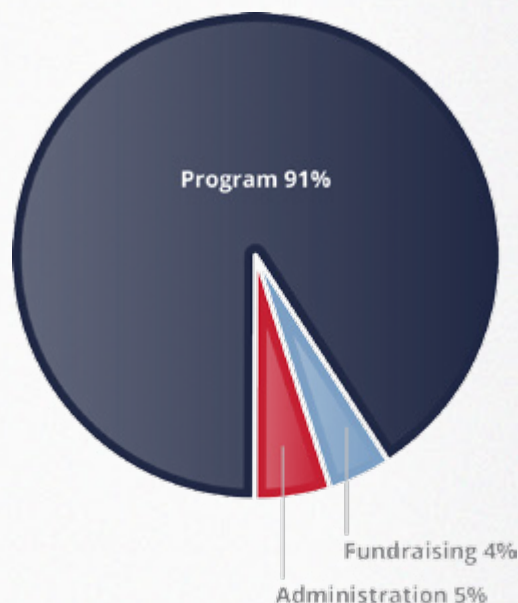
\$170 million received in 1995 to create Rose Community Foundation

\$313 million total foundation assets end of 2014

6% investment return in 2014

In 2014, **our assets grew from \$302 million to \$313 million** while awarding **nearly \$18 million** in grants.

GRANTS & EXPENSES 2014



Rose Youth Foundation is a youth-led philanthropy program for Jewish teens. Each year, members work together to explore Jewish traditions of giving, identify needs in our community and make grants to help address those needs. In 2014, they awarded \$60,000 to area nonprofits.

Note: Rose Community Foundation's full audited financial statements and tax returns will be posted online at rcfdenver.org as soon as they are available. You may also call **303.398.7434** to request a printed copy.

2014 Committees

Rose Community Foundation benefits from significant leadership from the Greater Denver community through our volunteer committee members.

8 Committees + 1 Council

76 Volunteers from the community

\$8.9 million in grants that committee members helped direct into the community in 2014

Each program area has its own committee of community leaders and content experts who advise program officers on grantmaking activities. Both the Audit and Finance and Investment Committees lend expertise by ensuring adherence to ethical standards and stewarding Foundation assets. The Philanthropic Services Committee advises staff on how to better engage donors in their work and the Professional Advisor Council guides our staff on the best ways to serve professional advisors and their clients regarding charitable gift planning.

Aging

Milroy A. Alexander, Chair
Marco Chayet

Mark Cordova
Sue Damour

Jean Galloway
Courtney Hoskins

Ronald E. Montoya
Morris W. Price, Jr.



“I had several positive touches with the predecessor hospital (Rose Medical Center) and I knew Rose Community Foundation had a solid reputation for its work. Having no experience in the field of aging, but knowing my own expertise and how aging matters to everyone, I was motivated to learn more while helping the community in this new way.”

– Milroy A. Alexander

Audit and Finance

Douglas L. Jones, Chair

Milroy A. Alexander

Lisa Reckler Cohn

Katherine Gold



“Having served on the Audit Committee for 10 years, I have had the opportunity to observe first-hand the leadership and stewardship of Rose Community Foundation as it relates to the operating and grantmaking budget process. Our responsibility as a committee is one that asks tough questions during good and tough economic times, working closely with staff to insure the Foundation is a reliable and active resource for the greater Denver community.”

– Douglas L. Jones

Child and Family Development

Lisa Reckler Cohn, Chair
Luis Colón
Mary Gittings Cronin

Katherine Gold
David Goldberg
Judy Koff

Scott L. Levin
Dean Prina, M.D.

Irit Waldbaum
Brian Wilkinson



“The Child and Family Development Committee’s work exemplifies what energizes me so about my involvement with Rose Community Foundation. Serving on the committee provides an opportunity to work with dedicated volunteers and top-notch professionals to use strategic philanthropy to make a meaningful difference in our community. For the children our grants serve, it makes a positive difference in their lives. And if that weren’t enough, our work also drives systemic change, making sustainable improvements to the system that educates our children and helps to strengthen their families – both for their sakes and for the future of our community overall.” – Lisa Reckler Cohn

Education

Monte Moses, Ph.D., Chair
Judy Altenberg
John Barry

Dori Biester, Ph.D.
Jerrold L. Glick
Rob Klugman

Kristin Richardson
George Sparks

Michael Touff
Ben Valore-Caplan



“Serving on the Education Committee is rewarding to me for several reasons. Foremost is the opportunity to positively impact the lives of Denver area students by helping improve the schools they attend. In addition, the Education Program Officer and the committee members provide interesting insights that have broadened my perspective about public education, its challenges and ways the enterprise can be strengthened.” – Monte Moses, Ph.D.

Health

Helayne B. Jones, Ed.D, Chair
Jane Butcher

Joan Henneberry
Douglas L. Jones

William N. Lindsay, III
Lilly Marks

Jeannie Ritter
Jason Romero



“Serving on the Health Committee has allowed me to learn deeply about the health sector with a special focus on Early Childhood Mental Health. This focus area has allowed us the opportunity to partner with other organizations to make a lasting impact on the future of our community and the health of our community’s children. It has been a rewarding experience for all of us.” – *Helayne B. Jones, Ed.D.*

Investment

Jerrold L. Glick, Chair
David Boyles

Steven A. Cohen
Stephanie Foote

Evan Makovsky
Denise O’Leary

Richard L. Robinson
Susan Sturm



“I believe very deeply in the mission of Rose Community Foundation, and chairing the investment committee has been an honor and a privilege. What has been most interesting is the interaction with the other committee members; their thoughtfulness and expertise in a wide range of disciplines is of real value to the Foundation. The success that we’ve experienced is a result of that collaboration.” – *Jerry L. Glick*

Jewish Life

Judy Altenberg, Chair
Tobey Borus
Josh Dinar
Steve Ellis

Arlene Hirschfeld
Rob Klugman
Jennifer Dinn Korman
Rick Kornfeld

Steven Kris
Evan Makovsky
Kathy Neustadt
Neil Oberfeld

Michele Scharg
Jim Shmerling, Ph.D.
Irit Waldbaum
Phil Weiser
Faye Weitzman



“I’m involved with the Jewish Life Committee because I value building community in innovative and strategic ways. I am especially proud of our work around early childhood and teens, which track important entry and sustaining points in Jewish life. The success of our future community is only as successful as the involvement of our youngest members.” – *Judy Altenberg*

Philanthropic Services

Irit Waldbaum, Chair
Mary Gittings Cronin
Lezlie Goldberg

Lynda Goldstein
Arlene Hirschfeld
Douglas L. Jones

Helayne B. Jones, Ed.D.
Donald L. Kortz
Stephen Kurtz

Neil Oberfeld
Dean Prina, M.D.
Lisa Robinson
Richard L. Robinson



“I enjoy being the liaison between Rose Community Foundation’s Board of Trustees and Philanthropic Services. It is important that our volunteer leadership understand and participate in the philanthropic engagement offered by Rose Community Foundation. I am proud to say that 100% of our Trustees, committee members and staff give to Rose Community Foundation annually. Some also participate in donor-advised funds and the Legacy Circle by including the Foundation in their estate plans.” – *Irit Waldbaum*

Professional Advisor Council

Merry Balson, Balson & Faix, LLP
Cary Chapman, Atlantic Trust
Laura Dinan, Holland & Hart, LLP
Taylor Dix, Lewis, Bess, Williams & Weese P.C.
Mira Finé, Hein & Associates, LLP
Clark Griggs, Griggs Wealth Management
Cara Lawrence, Tierney Paul Lawrence LLP
Karen Leaffer, Leaffer Law Group LLC
Samuel Levy, Greenberg Traurig, LLP
Gary Poling, True North Capital Group
Gary Rand, Stark Schenkein LLP
Sharon Roth, Chapman & Roth, LLC
Ben Valore-Caplan, Syntinsic Investment Counsel, LLC
Karen Winkelman, Elevation Management Group



“Serving on the Professional Advisor Council has been a great opportunity for me to learn more about how Rose Community Foundation is contributing to our community. It has also given me a foundation for talking with my clients about how they can partner with the Foundation through a donor-advised fund or otherwise. Finally, it has been a great opportunity to get to know like-minded professional advisors.” – *Laura Dinan, Member, Professional Advisor Council*

Funds at Rose Community Foundation

To learn more, please call 303.398.7418 or visit rcfdenver.org/giveandplan.

Rose Community Foundation is proud to house and steward funds established by individuals, families, organizations, groups and businesses.

Donor-Advised Funds

AHF Charity Thirty Fund
A-P Family Fund
Ahma Fund
M & S Alexander Family Charity Fund
Allergy and Asthma Health Fund
The Anchor Fund
The Atler Family Schmitt Fund
The Bay Philanthropic Fund
The Bender Family Fund
The BLTS Fund
Bugdanowitz Family Fund
The Button Stores Philanthropy Fund
Mark Cordova Family Fund
The Corley Family Fund
Mary Gittings Cronin Fund
David J. and Vicki Perlmutter Dansky Fund
Barbara Mellman Davis Fund
Lee and Barbara Mellman Davis Fund
Figa Family Fund
Firefly Fund
Fischborn Fund
The Foote Wade Family Fund
Charles and Anne Garcia Fund
Tom and Margie Gart Family Fund
GoFish Fund

Brett, Scott, Devon and Kyle Goldberg Charitable Fund
Grandwine Fund
The Gray Family Donor-Advised Fund
Gerald and Lorna Gray Family Fund
Renee and Martin Gross Family Foundation
A. Barry and Arlene F. Hirschfeld Family Fund
The Dan and Angela Japha Family Charitable Fund
Jewish Women's Fund of Colorado
Larry and Helayne Jones Family Fund
Kikumoto Family Fund
David and Judy Koff Family Fund
The Korff Family Fund
Kortz Family Fund
L & M Charitable Fund
The Harold Lane Memorial Fund
Lanig Family Foundation
Leaffer Family Charitable Fund
J. Leonard and Myra B. Levy Fund
Lion Heritage Fund
Evan and Evi Makovsky Family Fund
The Mally Fund
Never Summer Gift Fund
Over the Rainbow Fund
Papa Marv Fund
The Pollock Family Fund

Pollock/Gorden Donor-Advised Fund
JHJ Posner Family Fund
RCG Fund
Ready Foods Fund
RLC Foundation
The RLMF Donor-Advised Fund
Lisa and John Robinson Family Fund
Marcia and Richard L. Robinson Family Fund
Rose Women's Organization Donor-Advised Fund
The Shmerling Family Fund
Marvin and Harriet Shogan Family Fund
Judith and Martin Shore Donor-Advised Fund
Sturm Family Foundation Fund
Deanne Tucker Charitable Fund
Richard B. Tucker Family Fund
Wald and Weiser Fund
The Waldbaum Family Fund
The WaterBlum Fund
WE4Smith Foundation
Wilkinson Family Fund
Carolyn and Dave Wollard Donor-Advised Fund
The Wolman Family Fund
Xorak Fund

Colorado Technology Foundation Fund

“We value our programmatic and development partnership with Rose Community Foundation. The Colorado Technology Foundation (CTF) Fund enables us to bridge companies to education, technology and workforce programs. These programs align with employers' job-driven needs and community engagement priorities. Such needs and priorities include impactful employer engagement as well as leadership and participation in strategic partnerships and initiatives that bring systemic improvements to STEM education and workforce and scale technology talent development statewide.”

– Wendy Nkomo, Executive Director, Colorado Technology Foundation; COO, Colorado Technology Association

Learn more about CTF's work at rcfdenver.org/ctf.

Project PAVE Nonprofit Organization Endowment Fund

“Our board saw the potential of what an endowment can do, not only as it relates to sustainability but even general operating fundraising. When certain donors see you have an endowment, they know you’re in it for the long haul. People know they’re investing in an organization that’s investing in the future. Rose Community Foundation is helping us determine how to grow our endowment through current and future gifts like bequests and other types of planned gifts.” – Mike Johnson, CEO

Read the story at rcfdenver.org/endowmentprojectpave.



Designated and Field of Interest Funds

#Make It Happen Fund
ADL Regional Director Restricted Fund
Aging Field of Interest Fund
Boomers Leading Change Designated Fund
Building Jewish ECE
Child and Family Field of Interest Fund
Children's Diabetes Foundation Fund
Colorado Child Health Foundation Restricted Fund
Colorado Education Organizing Funders Collaborative
Colorado Friends Fund of the Harvard Women's Studies in Religion Program
Colorado Funders Flood Recovery Fund
Colorado Latino Age Wave Initiative
Colorado Nonprofit Social Enterprise Exchange
Colorado Technology Foundation Fund
Community Builders Fund
Cottonwood Institute Designated Fund
Early Childhood Education Designated Fund
Early Childhood Mental Health
Early Milestones Colorado
Education Field of Interest Fund
Ford Foundation
The Fund for Early Childhood
Gates Alliance
Gates Climb Higher
Girl Scouts of Colorado Board Designated Fund
Girl Scouts of Colorado Capital Designated Fund
• MMR Capital
• MMR Capital - Zip Line
• Wagner Fund
Health Field of Interest Fund
Innovate for Good
Jewish Life Field of Interest Fund
Jewish Teen Initiative
Latino Community Foundation of Colorado
Live On: Build Your Jewish Legacy
The Timothy and Bernadette Marquez Foundation Fund
Mazeltot.org
Sue Miller Transitions Fund
Opportunity Youth Investment Initiative
ProComp Restricted Fund
Project Pave Designated Fund
Roots & Branches Foundation
Rose Youth Foundation
The Spirituals Project Contingent Fund
Stephen H. Shogan Philanthropic Leadership Fund
Temple Micah Designated Fund

Nonprofit Organization Endowment Funds and Sub-Funds

AJC Colorado Legacy Endowment Fund
The Alexander Foundation Endowment Fund
Allied Jewish Apartments Endowment
Anti-Defamation League New Century Endowment Fund
• Atheneus Humanities Fund for the Anti-Defamation League
• Barbara and Norman Gray Fund
BMH-BJ Congregation
B'nai Havurah Endowment Fund
The Boulder Jewish Community Center Endowment Fund
Boulder Jewish Community Foundation Endowment Fund
Center for Judaic Studies, University of Denver Endowment Fund
• The Holocaust Awareness Institute Fund
• The Dr. Irwin E. Vinnik Fellowship Supplementary Fund
• Rabbi Dr. Stanley M. Wagner Community Cultural Fund
Colorado Agency for Jewish Education
Congregation Beth Evergreen Endowment Fund
• Ellen Diesenhof Educational Endowment Fund
Congregation Emanuel Fund
Denver Academy of Torah Endowment Fund
• England Fund
• Makovsky Fund
• MGB Foundation Fund
• Obby Shames Fund
Denver Jewish Day School Endowment Fund
• Auerbach Family Children's Fund
• Jack Robinson Memorial Scholarship Fund
• Rose Medical Center Sports and Fitness Endowment
• Charles and Louise Rosenbaum Scholarship Fund
Denver Public Schools Foundation
Girl Scouts of Colorado Endowment Fund
• Council General Operating Fund

• GSCO Endowment for Capital Replacement
• GSCO Endowment for Denver Metro Outreach - Century Link
• GSCO Endowment for Disabled Campers
• GSCO Endowment for Travel
• GSCO Endowment for Traveling Leaders
• Mary Jo Jacobs, M.D. Memorial Girl Scout Adventure Fund
• MP Camp Operating Fund
Hillel of Colorado Endowment Fund
• Raphael Levy Program Endowment
• Annie Rosen Fund
• Siegel Endowment Fund
The JAAMM FEST Endowment Fund
Jewish Family Service of Colorado Endowment
Latino Community Foundation of Colorado Endowment Fund
Mental Health America of Colorado Jeanne M. Rohner Endowment Fund
Mizel Museum
Project Pave Endowment Fund
Robert E. Loup, Jewish Community Center Harry and Jeanette Weinberg Endowment Fund
• Dena and Charlie Miller Theatre Fund
• Rose Medical Center Fund
• Wolf Theatre Academy Fund
Rose Youth Foundation Endowment Fund
Shalom Park Endowment
• Milton and Lillian Toltz Staff Appreciation Fund
The Spirituals Project Endowment Fund
Jerry Spitz Memorial Education Fund
Temple Micah Endowment Fund
Temple Sinai Endowment Fund
Yeshiva Toras Chaim Endowment Fund

2014 Board of Trustees

For a current list of trustees and their biographies, visit rcfdenver.org/trustees.



Jennifer Atler Fischer, Chair
Former Executive Director, Invest in Kids



Milroy A. Alexander
Business Consultant, MAA Consulting



Judy Altenberg
Community leader and volunteer



Steven A. Cohen
Executive Vice President, The Anschutz Corporation



Lisa Reckler Cohn
Executive Vice President, General Counsel and Secretary, Aimco



Jerrold L. Glick
Managing Partner, Columbia Group LLLP



Katherine Gold
President, Goldbug



Douglas L. Jones
President, The Jones Realty Group



Helayne B. Jones, Ed.D.
Former President & CEO, Colorado Education Initiative



Rob Klugman

President, The Rob Klugman Corporation



William N. Lindsay, III

President, Lockton Employee Benefits Group-Mountain West Series



Evan Makovsky

Managing Partner, NAI Shames Makovsky



Ronald E. Montoya

Owner, Innov8 Solutions USA



Monte Moses, Ph.D.

Senior Educational Consultant, Learning Together Company



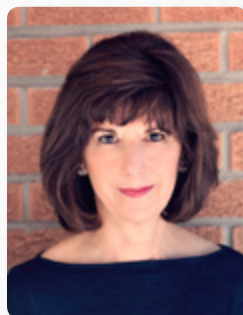
Neil Oberfeld

Shareholder, Greenberg Traurig, LLP



Dean Prina, M.D.

Partners in Pediatrics



Irit Waldbaum

Community leader and volunteer

Founding Board of Trustees

Linda G. Alvarado
Joseph M. Aragon
David C. Boyles
Fred T. Davine
Steven W. Farber
Jeannie Fuller
Stephen Kurtz
Norman Levy*
Sister Lydia M. Peña, Ph.D.

David M. Pollock
Richard L. Robinson
Stephen H. Shogan, M.D.
Martin H. Shore
Robert A. Silverberg
Richard B. Tucker*
Albert C. Yates, Ph.D.
Donald L. Kortz, Founding
President and CEO

**Deceased*

Rose Community Legacy Circle



Rose Community Foundation President and CEO, Sheila Bugdanowitz and her sister, Carol Sobel, contemplate the many philanthropic values and memories conveyed through images in the Living Legacy Tapestry.

Rose Community Legacy Circle is a group of individuals who have chosen to leave a bequest or other type of planned gift to Rose Community Foundation.

While they have different reasons for including a charitable gift in their future planning, they all share a common appreciation for our careful stewardship of their intentions and expertise in fund management, grantmaking and community issues. Learn more at rcfdenver.org/rcfc.

2014 Rose Community Legacy Circle Members

Judy Altenberg
Jennifer Atler Fischer
Lawrence A. Atler and
Marilyn VanDerbur Atler
Rick and Sheila Bugdanowitz
Lisa Reckler Cohn
Mark Cordova
The Curtiss-Lusher Family
David and Vicki Dansky
Fred and Maxine Davine
Barbara Mellman Davis
Jeff and Therese Ellery
Kenneth and Sheryl Feiler
Marshall Fogel
Stephanie Foote
Charles and Anne Garcia
Thomas and Marjorie Gart
Jerry Glick and Shannon Gifford
Katherine Gold
The Goldberg Family
Lynda Mallinoff Goldstein
Jonathan and Julia Gordon
Martin C.* and Renee Gross
Mark and Joan Henneberry
Lisa Herschli
Barry and Arlene Hirschfeld

Elsa Holguín-Lucero and
Edward Lucero
Robert R. Janowski M.D. and
Phillip A. Nash
Larry and Helayne Jones
Ron and Gale Kahn
Rob and Kathy Klugman
David and Judy Koff
Donald and Mary Lou Kortz
Steven and Elizabeth Kris
Hilreth Lanig
Gaye Leonard
Scott and Laure Levin
Myra Levy*
Norman Levy*
Evan and Evi Makovsky
Bobbi Lou Miller
Lisa Farber Miller
Sue Miller
Larry and Carol Mizel
Ron and Naomi Montoya
Kathy Neustadt
Neil and Barb Oberfeld
Jordon and Essie Perlmutter
David and Helene Pollock
Joanne Posner-Mayer

Dean Prina, M.D.
Gerald M. Quiat*
Melinda Quiat
Eddie and Susan Robinson
John and Lisa Robinson
Richard and Marcia Robinson
Jay Schusterman and Mary Lee
Nichole E. Scott
Miriam Sherman*
Jim and Debbie Shmerling
The Shogan Family
Martin H. and Judith Shore
Darlene Silver
Robert and Dale Silverberg
William S. Silvers, M.D.
Richard Tucker*
Liz Ullman
Art and Irit Waldbaum
Graig Weisbart and Shanti Chacko
Dave and Carolyn Wollard
Anonymous (6)

*Deceased

Rose Community Foundation Staff

Liz Baltimore, Program Assistant – Aging, Education

Sheila Bugdanowitz, President and CEO

Whitney Gustin Connor, Senior Program Officer – Health

Vicki Dansky, Senior Gift Planning Officer

Therese Ellery, Senior Program Officer – Aging

Todd Fahnstock, Executive Assistant, Program Assistant – Health

Ben Finan, Collaborative Giving Coordinator

Anne M. Garcia, Chief Financial and Operating Officer

Tish Gonzales, Office Manager, Program Assistant – Child and Family Development

Rachel Griego, Project Manager, Latino Community Foundation of Colorado

Josh Gold, MazelTot.org Initiative Manager

Marci Hladik, Director of Operations and Information

Mark Hockenberg, Controller

Elsa Holguín, Senior Program Officer – Child and Family Development

Sarah Indyk, Philanthropic Engagement Officer

Alicia Jirón, Communications Associate

Susan Lanzer, Philanthropic Services Assistant

Gaye Leonard, Director of Philanthropic Services

Janet Lopez, Senior Program Officer – Education

Carlos Martinez, Executive Director, Latino Community Foundation of Colorado

Cheryl McDonald, Grants Manager

Lisa Farber Miller, Senior Program Officer – Jewish Life

Jennifer Moe, Director of Marketing and PR

Elizabeth Moser, Program Assistant – Jewish Life

Emma Schwarz, Accountant/Human Resources

Kendra Shore, Executive Director, Jewish Women's Fund of Colorado

Beckett Stokes, Director of Communications

Alex Talavera, Development Associate

Anita Wesley, Philanthropy Advisor



Rose Community Foundation's long-term commitment to, and investment in, Colorado's Latino community is demonstrated through initiatives like the Latino Community Foundation of Colorado (LCFC).

In 2014, the LCFC awarded \$457,000 in grants to over 20 nonprofit organizations throughout Colorado, including the Hispanic Affairs Project (pictured here).

We acknowledge the significant contributions of the following staff members who left the Foundation during 2014:

Margie Gart
Cathleen Hall
Perri Klein

For a current list of staff and their biographies, visit rcfdenver.org/staff.

Publication credits:

Editorial: Rose Community Foundation staff, Andrea Nelson/Emphasis Marketing, LLC

Design: Wilson/Johnson Creative

Photography: Clayton Early Learning, Colorado School of Public Health, Grant Beacon Middle School, Grantmakers in Aging, Hispanic Affairs Project, Indira Lanig, Mile High Montessori Early Learning Centers, Moving Traditions, John Pechacek, Project PAVE

Printing: Sprint Denver



600 South Cherry Street, Suite 1200
Denver, Colorado 80246-1712

303.398.7400 info@rcfdenver.org
rcfdenver.org

